

System Samples Navigation Edges Time Series Transect

Discharge Summary

File	Start Date	Start Time	Duration	Track (m)	DMG (m)	Width (m)	Area (m2)	Mean Vel (m/s)	Boat Speed (m/s)	Left Q (m3/s)	Right Q (m3/s)	Top Q (m3/s)	Middle Q (m3/s)	Bottom Q (m3/s)	Total Q (m3/s)	% Measrec (%)
2009061...	12/06/2009	14:25:31	0:11:46	1499.43	1490.82	1619.82	23294.9	1.238	2.124	43.47	784.60	1275.80	24130.08	2614.85	28848.81	83.6
2009061...	12/06/2009	14:37:32	0:11:40	1485.51	1478.32	1629.32	23256.8	1.241	2.122	80.58	778.84	1271.02	24153.26	2582.30	28865.99	83.7
2009061...	12/06/2009	14:54:21	0:12:19	1495.37	1488.47	1624.47	23204.1	1.232	2.024	58.13	715.09	1270.93	24003.09	2535.34	28582.58	84.0
2009061...	12/06/2009	15:07:18	0:10:55	1492.99	1486.04	1632.04	23034.7	1.239	2.279	56.26	700.67	1272.33	24111.04	2406.81	28547.12	84.5
		Mean	0:11:40	1493.32	1485.91	1626.41	23197.6	1.238	2.137	59.61	744.80	1272.52	24099.37	2534.83	28711.13	83.9
		Std Dev	0:00:30	5.06	4.70	4.68	99.4	0.004	0.092	13.36	37.32	1.97	57.56	79.13	146.94	0.3
		COV	0.000	0.003	0.003	0.003	0.004	0.003	0.043	0.224	0.050	0.002	0.002	0.031	0.005	0.004

Yangtze River Wuhan, China June 12, 2009 Discharge = 28,711 m³/s +/- 0.5%

System

Process: Moving Boat

Step: End Edge (11)

Sample: 378

Time: 11:40:12

Duration: 0:06:18

Voltage (V): 13.9

Settings

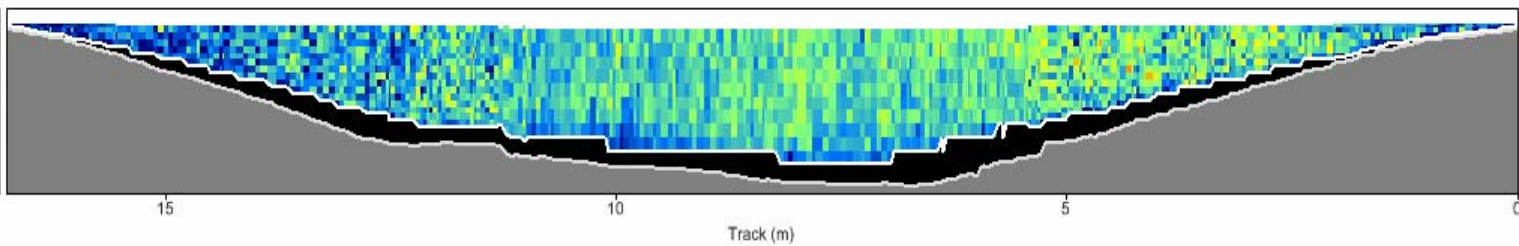
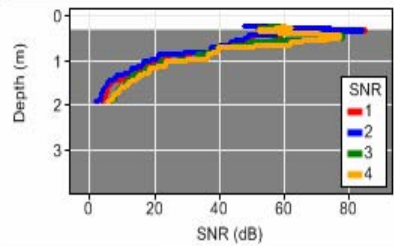
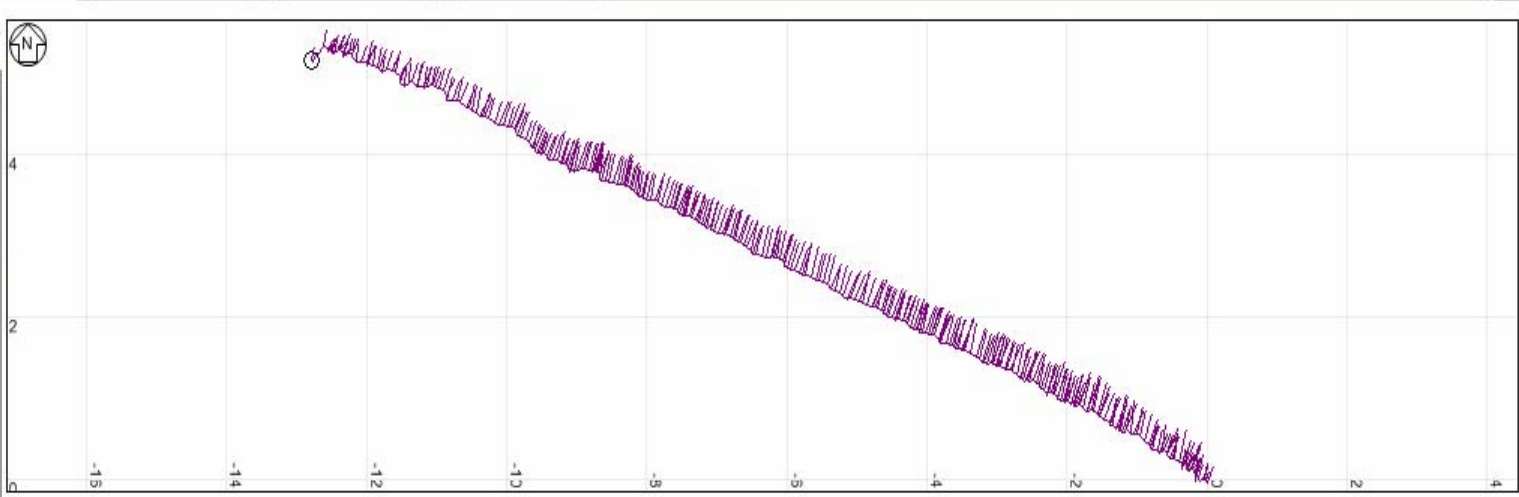
Track Reference: GPS-GGA

Depth Reference: Vertical Beam

Coordinate System: ENU

Summary

Total Q (m3/s): 13.75



Discharge Summary

File	Start Date	Start Time	Duration	Track (m)	DMG (m)	Width (m)	Area (m2)	Mean Vel (m/s)	Boat Speed (m/s)	Left Q (m3/s)	Right Q (m3/s)	Top Q (m3/s)	Middle Q (m3/s)	Bottom Q (m3/s)	Total Q (m3/s)	% Measurec (%)
2009011...	16/01/2009	11:14:18	0:05:50	16.65	13.67	14.28	33.3	0.400	0.048	0.00	0.01	1.49	10.14	1.65	13.30	76.2
2009011...	16/01/2009	11:21:36	0:04:22	16.06	13.70	14.30	33.1	0.404	0.061	0.00	0.01	1.52	10.08	1.75	13.37	75.4
2009011...	16/01/2009	11:26:49	0:06:46	17.44	13.73	14.34	33.6	0.402	0.043	0.00	0.01	1.54	10.27	1.70	13.52	76.0
2009011...	16/01/2009	11:33:55	0:06:18	17.19	13.76	14.37	33.7	0.408	0.045	0.00	0.01	1.55	10.45	1.73	13.75	76.0
		Mean	0:05:49	16.84	13.72	14.33	33.4	0.404	0.049	0.00	0.01	1.53	10.24	1.71	13.48	75.9
		Std Dev	0:00:54	0.53	0.03	0.03	0.3	0.003	0.007	0.00	0.00	0.02	0.14	0.04	0.17	0.3
		COV	0.000	0.032	0.003	0.002	0.008	0.007	0.144	0.148	0.181	0.014	0.014	0.023	0.013	0.004

Welton Irrigation Canal Arizona, USA USGS Discharge = 13.48 m³/s +/- 1.3%